

GIS, XR, & Pandemics

Pandemics Since 1918

Cholera 6 1817-1923 1M
Spanish Flu 1918-1919 40-50M
Asian Flu 1957-1958 1.1M
Hong Kong Flu 1968-1970 1M
HIV/AIDS 1981-Present 25-35M
SARS 2002-2003 770
Swine Flu 2009-2010 200K
MERS 2012-Present 850
Ebola 2014-2016 11.3K
COVID-19 2019-Present 6.9M

GIS & XR

Geographic Information Systems (GIS) are currently utilized in conjunction with Extended Reality (XR) technologies such as Virtual Reality (VR) and Augmented Reality (AR). GIS can layer geographic information with demographic, political, economic, or other statistical data to accurately reveal areas on the globe where healthcare disparities exist. We have the technology to do this today. Databases can be programmed with health information for use by GIS which can then be implemented in an XR environment for scientists, researchers, clinicians, and students to better understand public health pandemics, their source, and how they spread. This kind of information in an XR environment would allow for better collaboration among teams to quickly stop the spread of pandemics and efficiently provide assistance where it is needed most.

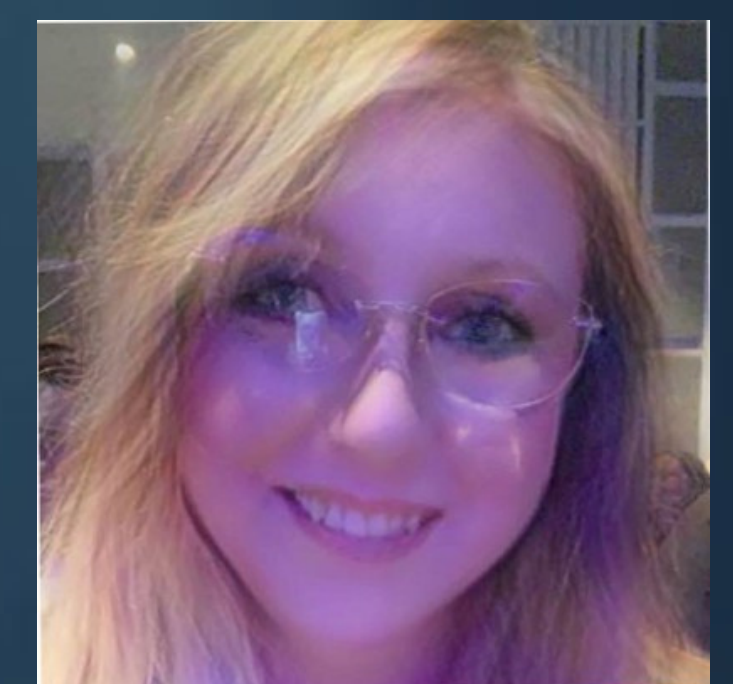
Political, Economic, and Social Aspects

By revealing locations with inadequate access to healthcare, humanitarian organizations could focus on providing the right types of assistance in the right places at the right times which would require international cooperation. Historically, the southern hemisphere usually experiences inadequate access to healthcare more so than the northern hemisphere mostly due to economics.

People who suffer from epidemics often experience social stigma usually due to fear of contagion. If scientists and researchers could study the effects of the pandemics at their source from anywhere in the globe, they would not have to worry about contagion. Preventing epidemics and educating the public about the source of pandemics could also help eliminate fear and social stigma.

Sources:

<https://tinyurl.com/3muc8swx>
<https://tinyurl.com/3n7mwtwc>
<https://tinyurl.com/udkw4t6>
<https://tinyurl.com/3but6nyv>



Created by Jessica Cummins
Library and Information Science Student
Louisiana State University in Baton Rouge, LA
References by Luis Interiano,
Reference Librarian at West Baton Rouge Parish Library